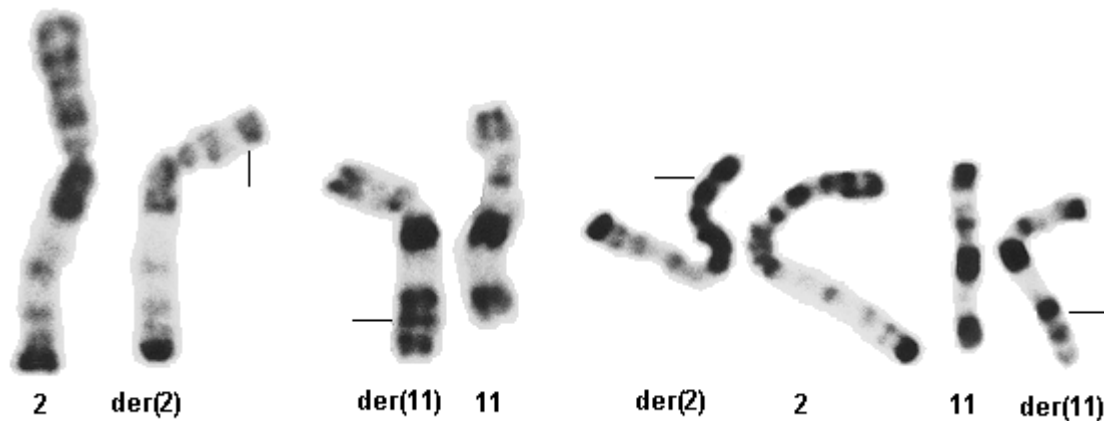


t(2;11)(p21;q23)

Identity



t(2;11)(p21;q23) R- banding (Editor)

Clinics and Pathology

Disease	myelodysplastic syndromes (MDS), acute non lymphocytic leukemia (ANLL) and acute lymphoblastic leukemia (ALL)
Phenotype / cell stem origin	20 cases were documented, 14 of them were MDS; in three cases, type of MDS was not described; the remaining cases were: 2 AISA, 5 RA and 4 RAEB; in 6 patients, MDS has transformed into ANLL (M1, M5a, M6 and unidentified); in 6 cases acute leukemia was diagnosed : 4 ANLL, 2 ALL; ANLL FAB-types were: M0 evolving into M4, M1, M2 and atypical M3
Epidemiology	male predominance: 13 M:7 F; the majority of patients (16 out of 20) were over 50 years of age and 8 of them were over 60 years of age
Clinics	variable
Prognosis	due to heterogeneity of cases and lack of molecular data, the prognostic importance of t(2;11)(p21;q23) cannot be assessed; in 6 cases of MDS transformation into ANLL, MDS phase varied from 18 mths to 5 yrs; in 4 out of 5 ANLL cases treated in 1986-1993, remission duration varied from 6 to 13 mths

Cytogenetics

Cytogenetics a high variability of breakpoints on both chromosome 2 (2p16-2p21) Morphological and chromosome 11 (11a13-11a25) were found by conventional

cytogenetics

Cytogenetics Molecular MLL gene involvement was observed in 2 out of 3 cases studied
Additional anomalies additional abnormalities were observed in 10 out of 20 cases; in 8 cases, [del\(5\)\(q13q33\)](#) is found; it is of note, that deletions of 5q usually are not seen in cases with MLL-associated translocations

Genes involved and Proteins

Note the gene involved in 2p in unknown

Gene Name

[MLL](#)

Location 11q23

Dna / Rna 37 exons, spanning about 120 kb; 13-15 mRNA

Protein 431 kD; transcriptional regulatory factor, nuclear localization; Contains two DNA binding motifs (a AT hook and zinc fingers), a DNA methyl transferase motif

Result of the chromosomal anomaly

Hybrid gene

unknown

Description

Fusion Protein

unknown

Description

External links

Other database [t\(2;11\)\(p21;q23\)](#) [Mitelman database \(CGAP - NCBI\)](#)

Other database [t\(2;11\)\(p21;q23\)](#) [CancerChromosomes \(NCBI\)](#)

Bibliography

A 2p11q chromosome translocation in dysmyelopoietic preleukemia.

Feder M, Finan G, Besa E, Nowell P.

Cancer Genet Cytogenet 1985; 15: 143-150.

Medline [85099024](#)

Translocation (2;11)(p21;q23) in acute nonlymphocytic leukemia; a non-random association.

De la Chapelle A, Knuutila S., Elonen E.

Scand J Haematol 1986; 45: 91-97.

Medline [86179631](#)

Rearrangement of MLL gene in acute lymphoblastic and acute myeloid leukemia with 11q23 chromosomal translocations.

Thirman MJ, Gill HJ, Burnett RC, Mbangkollo D, McCabe NR, Kobayashi H, Ziemin-van der Poel S, Kaneko Y, Morgan R., Sandberg AA, Chaganti RSK, Larson RA, Le Beau MM, Diaz MO, Rowley JD.

New Engl J Med 1993; 329: 909-914.

Medline [93368615](#)

MLL is involved in a t(2;11)(p21;q23) in a patient with acute myeloblastic leukemia.

Fleischman EW, Reshmi S, Frenkel MA, Konovalova VI, Guleva GP, Kulagina OE, Konstantinova LN, Tupitsyn NN, Rowley JD.

Gene Chromosom Cancer 1999; 24: 151- 155.

Medline [99101073](#)

Contributor(s)

Written 01- Elena W Fleischman
 2000

Citation

This paper should be referenced as such :

Fleischman EW . t(2;11)(p21;q23). Atlas Genet Cytogenet Oncol Haematol. January 2000 .

URL : <http://AtlasGeneticsOncology.org/Anomalies/t0211ID1109.html>

© *Atlas of Genetics and Cytogenetics in Oncology and Haematology*
