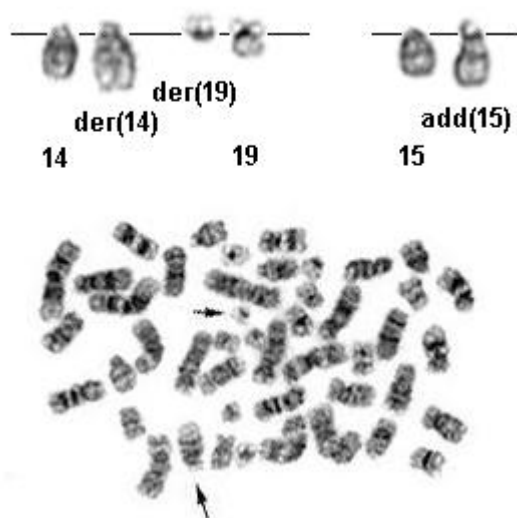


## t(14;19)(q32;q13) in acute lymphoblastic leukaemia

### Identity

**Note** This abnormality is cytogenetically identical but molecularly distinct from the [t\(14;19\) in CLL](#) and other chronic B-cell lymphoproliferative disorders which results in the juxtaposition of BCL3 with [IGH](#) on the der(14) and subsequent over expression of the BCL3 protein.



G-banded metaphase showing the t(14;19)(q32;q13). The derivative chromosomes 14 and 19 are arrowed (bottom) G-banded karyogram showing the t(14;19)(q32;q13) and a add(15q).(top)

### Clinics and Pathology

**Disease** Acute lymphoblastic leukaemia, B-lineage immunophenotype and FAB L1.

**Epidemiology** Very rare with only 10 cases reported to date. The estimated incidence in childhood and adult ALL is <1%. Among the reported cases there appears to be a female pre-dominance which is unusual for ALL. The age range of patients is 9 to 28 years with a median of 11.5 years. Thus this abnormality appears confined to adolescents and young adults.

**Clinics** Typically patients with this abnormality have low white cell count of  $<10 \times 10^9/L$

**Prognosis** It is difficult to assess the true prognosis of patients with this abnormality given its rarity, however initial data suggest that the prognosis is better than expected for patients of a similar age.

### Cytogenetics

**Note** This balanced translocation can usually be identified by G-banding alone. The breakpoint on chromosome is consistently given as 14q32; however the breakpoint on chromosome is more variable ranging from q11 to q13.

The t(14;19) has been described as the sole abnormality in several cases but is more frequently accompanied by additional structural abnormalities; none of which have yet shown to be recurrent. This abnormality has been reported in a single case with Down Syndrome.

### Genes involved and Proteins

Note The involvement of the IGH gene located at 14q32 has been demonstrated via FISH using the LSI IGH Dual Colour Break Apart Rearrangement Probe in all cases tested.

Metaphase and interphase FISH using probes flanking the BCL3 gene have ruled out the involvement of this gene; thus distinguishing it from the cytogenetically identical translocation seen in [CLL](#) and other chronic [B-cell lymphoproliferative disorders](#). The target gene on 19q13 is currently thought to lie centromeric of the BCL3 gene, but has not yet been elucidated.

### External links

Other database [t\(14;19\)\(q32;q13\) in acute lymphoblastic leukaemia](#) [Mitelman database \(CGAP - NCBI\)](#)

Other database [t\(14;19\)\(q32;q13\) in acute lymphoblastic leukaemia](#) [CancerChromosomes \(NCBI\)](#)

### To be noted

Additional cases are needed to delineate the epidemiology of this rare entity:  
**you are welcome to submit a paper to our new [Case Report](#) section.**

### Bibliography

#### **Karyotypic and clinical findings in a consecutive series of children with acute lymphocytic leukaemia.**

Heerema NA, Palmer CG, Baehner RL.  
Cancer Genetics and Cytogenetics 1985; 17: 165-179.  
Medline [3857967](#)

#### **Nonrandom Chromosomal-Abnormalities in Acute Lymphoblastic- Leukemia of Childhood.**

Prigogina EL, Puchkova GP, Mayakova SA.  
Cancer Genetics and Cytogenetics 1988; 32: 183-203.  
Medline [3163259](#)

#### **Immunophenotypes and Karyotypes of Leukemic-Cells in Children with Down-Syndrome and Acute Lymphoblastic-Leukemia.**

Pui CH, Raimondi SC, Borowitz MJ, Land VJ, Behm FG, Pullen DJ, Hancock ML, Shuster JJ, Steuber CP, Crist WM, Civin CI, Carroll AJ.  
Journal of Clinical Oncology 1993; 11: 1361-1367.  
Medline [8315434](#)

#### **Cytogenetic and FISH studies of a single center consecutive series of 152 childhood acute lymphoblastic leukemias.**

Andreasson P, Hoglund M, Bekassy AN, Garwicz S, Heldrup J, Mitelman F, Johansson B.

European Journal of Haematology 2000; 65: 40-51.  
Medline [10914938](#)

**t(14;19)(q32;q13): a recurrent translocation in B-cell precursor acute lymphoblastic leukaemia.**

Robinson HM, Taylor KE, Jalali GR, Cheung KL, Harrison CJ, Moorman AV.  
Genes Chromosomes and Cancer 2004; 39: 88-92.  
Medline [14603446](#)

**Contributor(s)**

**Written** 09-2004 Anthony V Moorman, Hazel M Robinson

**Citation**

*This paper should be referenced as such :*

**Moorman AV, Robinson HM** . t(14;19)(q32;q13) in acute lymphoblastic leukaemia.  
Atlas Genet Cytogenet Oncol Haematol. September 2004 .

URL :

<http://www.infobiogen.fr/services/chromcancer/Anomalies/t1419q32q13ALLID1335.html>

© *Atlas of Genetics and Cytogenetics in Oncology and Haematology*

---