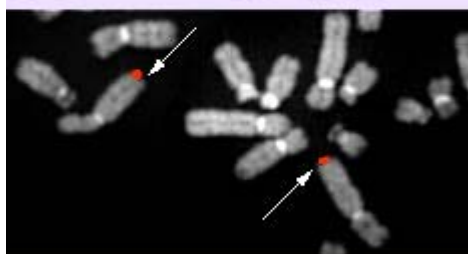
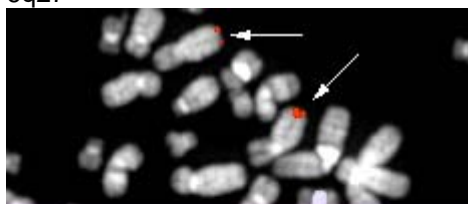


MLLT4 (myeloid/lymphoid or mixed-lineage leukemia (trithorax); translocated to, 4)

Identity

Other names **AF6 (ALL1 fused gene from chromosome 6)**
MLLT4 (myeloid/lymphoid leukemia translocated to, n° 4)

Hugo **MLLT4**
Location **6q27**



dJ431P23 (top) and dJ470B24 (bottom)

[AF6 \(6q27\)](#) - Courtesy Mariano Rocchi, [Resources for Molecular Cytogenetics](#).
Laboratories willing to validate the probes are welcome : contact rocchi@biologia.uniba.it

DNA/RNA

Transcription 8 kb mRNA; coding sequence: 4.8 kb

Protein

Description 1612 amino acids; contains a GLGF motif, which may have a role in membrane/cytoskeleton relations

Expression widely expressed

Localisation cytoplasmic

Function may be involved in molecular transport system; signal transduction

Homology cno (drosophila)

Implicated in

Entity [t\(6;11\)\(q27;q23\)/ANLL](#) --> MLL/AF6

Disease M4/M5 ANLL mainly

Prognosis poor

Cytogenetics may be overlooked; +8 is a frequent additional chromosome anomaly

Hybrid/Mutated Gene 5' MLL- 3' AF6

Abnormal Protein NH2-term MLL (with the AT hook and DNA binding motifs) and most of AF6

External links

	Nomenclature
Hugo	MLLT4
GDB	MLLT4
Entrez_Gene	MLLT4 4301 myeloid/lymphoid or mixed-lineage leukemia (trithorax homolog, Drosophila); translocated to, 4
	Cards
Atlas	AF6
GeneCards	MLLT4
Ensembl	MLLT4
CancerGene	MLLT4
Genatlas	MLLT4
GeneLynx	MLLT4
eGenome	MLLT4
euGene	4301
	Genomic and cartography
GoldenPath	MLLT4 - 6q27 chr6:168046369-168171498 + 6q27 (hg17-May_2004)
Ensembl	MLLT4 - 6q27 [CytoView]
NCBI	Genes Cyto Gene Seq [Map View - NCBI]
OMIM	Disease map [OMIM]
HomoloGene	MLLT4
	Gene and transcription
Genbank	AB011399 [SRS] AB011399 [ENTREZ]
Genbank	AL009178 [SRS] AL009178 [ENTREZ]
Genbank	E13503 [SRS] E13503 [ENTREZ]
Genbank	AB016898 [SRS] AB016898 [ENTREZ]
Genbank	AB016902 [SRS] AB016902 [ENTREZ]
RefSeq	NM_005936 [SRS] NM_005936 [ENTREZ]
RefSeq	NT_086699 [SRS] NT_086699 [ENTREZ]
AceView	MLLT4 AceView - NCBI
TRASER	MLLT4 Traser - Stanford
Unigene	Hs.549055 [SRS] Hs.549055 [NCBI] HS549055 [spliceNest]
	Protein : pattern, domain, 3D structure
SwissProt	P55196 [SRS] P55196 [EXPASY] P55196 [INTERPRO]
Prosite	PS50006 FHA DOMAIN [SRS] PS50006 FHA DOMAIN [Expasy]
Prosite	PS50106 PDZ [SRS] PS50106 PDZ [Expasy]
Prosite	PS50200 RA [SRS] PS50200 RA [Expasy]
Interpro	IPR002710 DIL [SRS] IPR002710 DIL [EBI]
Interpro	IPR000253 FHA [SRS] IPR000253 FHA [EBI]
Interpro	IPR001478 PDZ [SRS] IPR001478 PDZ [EBI]
Interpro	IPR000159 RA [SRS] IPR000159 RA [EBI]
Interpro	IPR008984 SMAD FHA [SRS] IPR008984 SMAD FHA [EBI]
CluSTr	P55196
Pfam	PF01843 DIL [SRS] PF01843 DIL [Sanger] pfam01843 [NCBI-CDD]
Pfam	PF00498 FHA [SRS] PF00498 FHA [Sanger] pfam00498 [NCBI-CDD]
Pfam	PF00595 PDZ [SRS] PF00595 PDZ [Sanger] pfam00595 [NCBI-CDD]
Pfam	PF00788 RA [SRS] PF00788 RA [Sanger] pfam00788 [NCBI-CDD]
Smart	SM00240 FHA [EMBL]
Smart	SM00228 PDZ [EMBL]
Smart	SM00314 RA [EMBL]
Prodom	PD003376 DIL [INRA-Toulouse]
Prodom	P55196 AFAD HUMAN [Domain structure] P55196 AFAD HUMAN [sequences sharing at least 1 domain]
Blocks	P55196
	Polymorphism : SNP, mutations, diseases
OMIM	159559 [map]

[GENECLINICS](#) [159559](#)
[SNP](#) [MLLT4](#) [dbSNP-NCBI]
[SNP](#) [NM_005936](#) [SNP-NCI]
[SNP](#) [MLLT4](#) [GeneSNPs - Utah] [MLLT4](#) [SNP - CSHL] [MLLT4](#) [HGBASE - SRS]

General knowledge

[Family Browser](#) [MLLT4](#) [UCSC Family Browser]
[SOURCE](#) [NM_005936](#)
[SMD](#) [Hs.549055](#)
[SAGE](#) [Hs.549055](#)
[Amigo](#) [process|cell adhesion](#)
[Amigo](#) [process|cell adhesion](#)
[Amigo](#) [process|cell-cell signaling](#)
[Amigo](#) [component|intercellular junction](#)
[Amigo](#) [function|motor activity](#)
[Amigo](#) [component|myosin](#)
[Amigo](#) [function|protein C-terminus binding](#)
[Amigo](#) [function|protein binding](#)
[Amigo](#) [process|signal transduction](#)
[PubGene](#) [MLLT4](#)

Other databases

Probes

[Probe](#) [Cancer Cytogenetics \(Bari\)](#)
[Probe](#) [MLLT4 Related clones \(RZPD - Berlin\)](#)

PubMed

[PubMed](#) [8 Pubmed reference\(s\) in LocusLink](#)

Bibliography

Cloning of the ALL-1 fusion partner, the AF-6 gene, involved in acute myeloid leukemias with the t(6;11) chromosome translocation.

Prasad R, et al
Cancer Res. 1993 Dec 1;53(23):5624-8.
Medline [94061833](#)

Chromosome abnormalities in leukaemia: the 11q23 paradigm

Young BD, et al
Cancer Surv. 1996;28:225-45. Review.
Medline [97131386](#)

Molecular basis of 11q23 rearrangements in hematopoietic malignant proliferations.

Bernard OA, et al
Genes Chromosomes Cancer. 1995 Jun;13(2):75-85. Review
Medline [95352544](#)

11q23 rearrangements in acute leukemia.

Rubnitz JE, et al.
Leukemia. 1996 Jan;10(1):74-82. Review.
Medline [96145214](#)

[REVIEW articles](#) *automatic search in PubMed*

[Last year publications](#) *automatic search in PubMed*

[BiblioGene - INIST](#)

Contributor(s)

Written 12-1997 Jean-Loup Huret

Citation

This paper should be referenced as such :

Huret JL . MLLT4 (myeloid/lymphoid or mixed-lineage leukemia (trithorax); translocated to, 4). Atlas Genet Cytogenet Oncol Haematol. December 1997 .
URL : <http://www.infobiogen.fr/services/chromcancer/Genes/AF6.html>

© *Atlas of Genetics and Cytogenetics in Oncology and Haematology*
