

**CASE REPORTS in HAEMATOLOGY**  
(Paper co-edited with the European LeukemiaNet)

**Reciprocal translocation t(2;12)(q31;p13) in a case of CMML**

Despina Iakovaki, Markos Fisfis, Katy Stefanoudaki, Georgia Bardi

**Clinics**

Age and sex : 78 yrs old male patient

Previous history : no preleukemia no previous malignant disease; no inborn condition of note

Organomegaly : no hepatomegaly; splenomegaly; no enlarged lymph nodes; no central nervous system involvement

**Blood**

Hb : 5.7 g/dl; platelets :  $86 \times 10^9/l$ ;

Bone marrow : increased cellularity, hyperplastic granulocytic series with dysgranulopoiesis, polymorphous and dysplastic megakaryocytes, numerous micromegakaryocytes, depressed erythroid series. Blasts: 5%, Monocytes:17%. Note: WBC Differential: Neu:23, Lymph:31, Mono:41, Myelo-Metamyelocytes: 5%, granulocytic dysplasia. Absolute monocyte count:  $1.3 \times 10^9/l$

**Cyto pathology classification**

Cytology and immunophenotype : ;

Precise diagnosis : Chronic myelomonocytic leukemia (CMML)

**Survival**

Date of diagnosis: 02-2003

Treatment : Supportive; blood transfusions, steroids, platelets transfusions

Complete remission : None

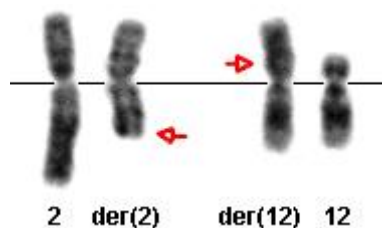
Status : Dead 11-2005

Survival : 33 months

**Karyotype**

Sample : Bone marrow; culture time : Direct preparations (after 1 h in culture) and 24 H; banding : G-banding with Wright stain

Results :  $46,XY,t(2;12)(q31;p13)[22]/47,idem,+21[3]$ .



Partial karyogram of the cytogenetically abnormal clone with the translocation t(2;12)(q31;p13). The arrows indicate the breakpoint in the abnormal chromosomes 2 and 12.

## Comments

Among the haematological malignancies with clonal chromosome aberrations reported in the world literature, there is only one case with the same translocation t(2;12)(q31;p13), a non Hodgkin lymphoma published by Sato et al., 1997. The karyotypic findings of the present case indicates a cytogenetic clonal evolution, since a second abnormal clone with the translocation t(2;12)(q31;p13) and trisomy of chromosome 21 was identified together with the clone displaying the t(2;12)(q31;p13) as the sole change.

## Internal links

Atlas Card [t\(2;12\)\(q31;p13\)>t\(2;12\)\(q31;p13\)](#)

## Bibliography

**Heterogeneity in the breakpoints in balanced rearrangements involving band 12p13 in hematologic malignancies identified by fluorescence in situ hybridization: TEL (ETV6) is involved in only one half.**

Sato Y, Bohlander SK, Kobayashi H, Reshmi S, Suto Y, Davis EM, Espinosa III R, Hoopes R, Montgomery KT, Kucherlapati RS, Le Beau MM, Rowley JD, Blood 1997; 90: 4886-4893

Medline [9389705](#)

## Contributor(s)

**Written** 11-2006 Despina Iakovaki, Markos Fisfis, Katy Stefanoudaki, Georgia Bardi

## Citation

*This paper should be referenced as such :*

**Iakovaki D, Fisfis M, Stefanoudaki K, Bardi G** . Reciprocal translocation t(2;12)(q31;p13) in a case of CMML. Atlas Genet Cytogenet Oncol Haematol. November 2006 .

URL : <http://AtlasGeneticsOncology.org/Reports/0212IakovakiID100017.html>

© *Atlas of Genetics and Cytogenetics in Oncology and Haematology*

---